

FLASHING, PREPAINTED STEEL
24ga., COLOUR MATCHING
MatrixAIR CLADDING - PROFILE TO
BE MANUFACTURED ON SITE

FOAM CLOSURE
ON CLADDING FACE

USE POP-RIVETS AND SCREWS
FOR THIS JOINT WITH MORE
THAN 2 METAL LAYERS

ALUMINIUM LINER PROTECTING
THE THE INSULATION APPLIED
BY INSTALLER (IF APPLICABLE)

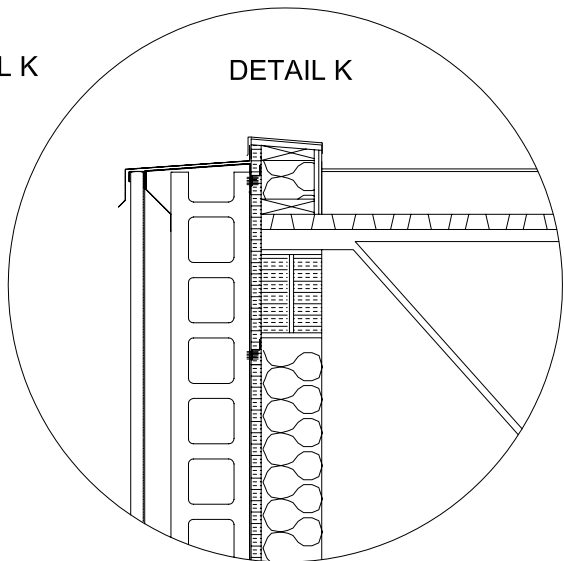
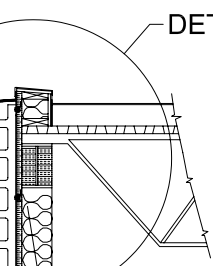
#14x1" (6mm D x 25mm L)
SELF-DRILLING METAL SCREW,
PLATED AND GALVANIZED,
TYPICALLY MINIMUM 6 SCREWS AT
EVERY ATTACHING POINT

TEK3 #14x1" (6mm D x 25mm L)
EXPOSED SELF-DRILLING METAL
SCREW, PLATED AND GALVANIZED,
PAINTED MATCHING COLLECTOR
COLOUR, TYPICALLY @ EVERY 15"
[380mm]

DIMENSION TO BE CHEQUED ON
SITE AND ADJUSTED IF NEEDED

PERFORATIONS FACILITATING
LATERAL AIR CIRCULATION IN
THE COLLECTOR

HEIGHT



FASTENERS TO THE BUILDING STRUCTURE
ACCORDING TO THE BUILDING CODE TO
RESIST APPLICABLE CHARGES (WIND,
SUCTION AND OTHERS), TO BE DETERMINED
BY OTHERS.
THE OWNER SHOULD CHECK THAT GIRTS OR
OTHER WALL COMPONENTS ARE INSTALLED
@ 48" [1200mm] C/C, ON WHICH THE
COLLECTOR WILL BE ATTACHED.
THESE GIRTS SHOULD BE ADEQUATELY
ATTACHED TO THE BUILDING STRUCTURE.

NOTES:

THIS DRAWING IS A SUPERPOSITION OF THE SOLAR
COLLECTOR STRUCTURE ON THE ARCHITECTURAL
DRAWINGS (DRAWING ON WHICH OFTEN THE DIMENSIONS
CANNOT BE MEASURED PRECISELY) AND IS NOT BASED
ON A SITE VISIT. NO STRUCTURAL DRAWINGS HAVE BEEN
ANALYSED.

MATRIX ENERGY IS NOT RESPONSIBLE FOR DIFFERENCES
BETWEEN DIMENSIONS ON SITE AND THESE DRAWINGS.

SMALL DIMENSION DIFFERENCES ARE POSSIBLE.

THE FINAL PRECISE DIMENSIONS WILL BE MEASURED ON
SITE BY THE CONTRACTOR AND THE COLLECTOR'S
DIMENSIONS WILL BE ADJUSTED ACCORDINGLY.

THE OPENINGS FOR THE AIR-INTAKES AND THE
CONNECTIONS TO THE VENTILATION DUCTS ARE THE
RESPONSABILITY OF THE GENERAL CONTRACTOR.

THE INSTALLING CONTRACTOR WILL MAKE SURE THAT
THE SOLAR COLLECTOR IS SAFELY ATTACHED TO THE
BUILDING STRUCTURE, ACCORDING TO THE NATIONAL
BUILDING CODE.

MATRIX ENERGY IS NOT RESPONSIBLE FOR THE
FASTENERS TO THE BUILDING STRUCTURE.

BYPASS LOUVERS ARE TO BE POSITIONED
DIRECTLY IN FRONT OF THE COLLECTORS
AIR OUTLETS TO THE HVAC SYSTEM.

MAX.60" [1524mm]

LOUVER

LOUVER'S
ACTUATOR

H/2

MAX.60" [1524mm]

AIR-INTAKE OF THE
VENTILATION SYSTEM

BUILDING WALL

USE POP-RIVETS AND SCREWS
FOR THIS JOINT WITH MORE
THAN 2 METAL LAYERS

FLASHING, PREPAINTED STEEL 24ga., COLOUR
MATCHING MatrixAIR CLADDING - PROFILE TO BE
MANUFACTURED ON SITE (WITH OPENINGS FOR
WATER DRAINAGE FOR THE BOTTOM PROFILE)

NOTE:

This drawing was issued as an example. This is not a construction drawing.
The conformity to specific local building codes and regulations and the installation
conditions are to be verified and respected by the installer.



296 Labrosse Avenue
Pointe-Claire, Québec
H9R 5L8, Canada
Tel.: 1-866-630-5630
Fax: 514-426-9123
www.matrixenergy.ca



#	Date	Revision Description
Rev. Date:	2008/05/06	
Revision #:	0	
Date:	2008/05/06	
Drawing #:	MXA-1012/12ed	

The information presented is for discussion purposes only and remains the exclusive property of Matrix Energy Inc. and may not be reproduced in whole or in part without expressed written permission of Matrix Energy Inc. MatrixAIR is a registered trademark of Matrix Energy Inc. The MatrixAIR[®] solar air heating system is Patent Pending.

